

Welcome to Camp!

Arrowbear Information Packet

1st Intermediate Session

July 1-14, 2018

Thank you for choosing to make us a part of your summer adventures.

We can't wait to see you in the mountains!

Your 1st day arrival drop off time will be emailed to you on June 17th and will fall between 1:00 and 4:00pm.

Happy camping 😊

~The Arrowbear team~

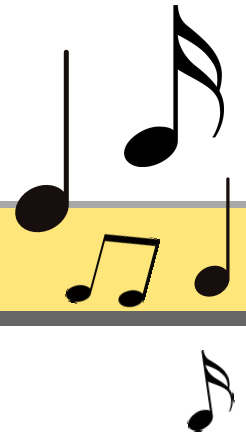


Packet Contents:

- Pre-camp Checklist..... p. 1
- Arrival and Departure Information..... p. 1
- Directions to camp..... p. 1
- Tuition Balance and Scholarship Information... p. 2
- Medication Information..... p. 2
- General Camp Information..... p. 2-4
 - auditions
 - communication policies
 - photos and group roster (the 'note')
 - snack bar and camp store
 - sleeping arrangements
 - visiting policies
- Packing List..... p. 5

Information at a Glance:

- Camp office phone: 909-867-2782
- Larke's cell phone: 562-225-7766
- June 22nd: balance and completed health form due
- July 1st: Arrival- check email June 17th for specific drop off time
- July 14th: Pick up day- 5pm concert
- Camp's mailing address: PO Box 180, Running Springs, CA 92382
- Camp's physical address 33500 Music Camp Rd., Arrowbear Ik, CA 92382



Pre Camp Checklist:



- Balance paid- due in full by June 22nd
- Packing list double checked
- Online Health Form completed and up to date
- Attn: Campers who have attended Arrowbear in previous summers- please check that your health information is current and that your musical questionnaire is up to date
- Medications properly labeled and ready to turn in

Arrival and Departure Information:

First Day of Camp-July 1st- check email June 17th for drop-off time

Due to limited parking, we assign arrival times based on enrollment date. If you arrive to camp early, please head back into town for a nice cup of joe or a yummy brunch at a local diner such as Blondie's Grille.



Last Day of Camp July 14th- Final Concert 5pm:

The Final Concert will be held at 5pm on campus. Guests may arrive anytime after 3:30 pm to visit and load luggage. Please do not arrive early as our program will still be in session and camp will be closed.



Parking

Final concert parking will be stacked, filling every available area of camp starting with the areas farthest from the entrance (think Hollywood bowl style). Camp staff will be available to direct- look for the folks in the orange vests. If you wish to be closer to the exit, please arrive closer to concert time. Thank you in advance for being patient with our parking system.

Please, for our legal compliance and safety no dogs are allowed on campus except for registered service dogs.

Carpool

If you are interested in carpooling, please let us know and we will email your name, contact info, and location to everyone on our 1st Intermediate roster 2 weeks before camp begins.

Driving Directions to Camp:

Physical address: 33500 Music Camp Rd, Arrowbear Lk, CA 92382

From I-210 in Highland, take HWY 330 towards Big Bear. After winding up the mountain road, continue through the small towns of Running Springs and Arrowbear.

Turn right at the second Arrowbear Drive (on the corner you will see a chain link fence and Blondie's Bar and Grille). If you reach a sign for Green Valley or Snow Valley Ski Resort, you have gone too far.

Stay to the left of the small pond (it may be dried up by June) and continue up Music Camp Road until you reach the camp. We have a large, green, and brown "Arrowbear Music Camp" sign at the entrance to the camp.

Follow signs to the check-in station.



Tuition Balance and Scholarship Information:

Tuition Fees

Your remaining balance must be paid by June 22nd.

Scholarships

If you paid in full for camp and then received an AMA scholarship, your scholarship check will be handed to you during check-in. If a parent or guardian is not present to pick up the check we will mail it the following day.

If you received a scholarship from an organization other than Arrowbear Music Associates, please make sure camp has received all necessary paperwork.

Medications:

All medications must be turned into the Camp Health Supervisor at check-in. This includes over the counter medications and is for legal compliance and camp safety. Medications **MUST** be in their original, labeled containers or they will not be administered. If you transfer pills into daily pill containers, make sure to provide the original prescription bottle.

General Camp information:

Auditions

Within the first few days of camp, each camper will meet with our music staff for an audition. This will help our teachers understand the needs of each camper. Do not worry about the audition; camp is a very supportive and noncompetitive environment. We are all here to learn. :)

In preparation for your audition please work on the following:

Strings:

1. C, G, D, F, and Bb Major Scales- as many octaves as you can play well
2. A short excerpt from a current solo or orchestral work

Winds:

1. Bb, F, Eb, G, and D major scales- 1 or 2 octave chromatic scale
2. Demonstration from both a fast piece/excerpt and a slow piece/excerpt

Communication with campers-

Old fashioned snail mail

Campers love to receive mail while at camp!

Please mail to-

Camper's Name

c/o Arrowbear Music Camp

PO Box 180

Running Springs, CA 92382



Alternatively, family and friends are welcome to leave mail with the camp office to be placed in the camper's mailbox on a specific day.

Any mail that arrives after the session ends will be returned to sender.

One way emails through UltraCamp

Log into your ultracamp account and choose "additional Options" on the upper right hand side. Choose "Email a camper" from the drop down menu. Emails will be printed and placed in the campers' mailbox daily.

Messages

Messages received via email, text, or phone call will be placed in the campers' mail box daily.

Cell Phones

All campers will be very busy playing music, making friends, and enjoying the camp/mountain atmosphere. We highly recommend that you leave your cell phone and other electronic devices at home.

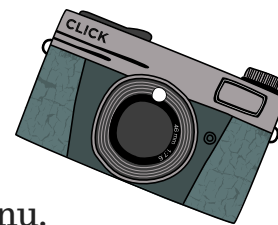
We truly believe that camp is a more fulfilling experience for campers when cell phones are not involved. They really do distract from total involvement in the experience. With that said, we have done our best to find a happy medium to accommodate those who feel that communication during the session is necessary.

For campers who bring a cell phone:

- Phones must be turned in during registration.
- Phones may be checked out for use on the 1st Wednesday, Saturday, 2nd Tuesday, and last Friday between 3:00pm and 3:30pm.
- Campers who do not bring a phone, but wish to make a call during this time, will have access to a camp phone.

Daily Camp Photos:

Starting on Monday night (July 2nd) we will upload session photos to ultracamp. Check back daily at approximately 7pm for new uploads. Log into your ultracamp account and choose "Additional Options" on the upper right hand side, then choose "Photo Gallery" from the drop down menu.



Commemorative Photo and Camp Roster (the 'note')

At the end of the session we will provide all the campers with a group photo and roster including contact information for all campers and staff. If you wish to have your contact information left off the roster please let us know.

Arrowbear Store:

During free time we sell a small assortment of snacks and camp gear. All money must be turned in to the camp for safekeeping. A debit system will be used for purchases and the remaining balance will be returned in cash on the last day. We accept cash, check, money order made out to Arrowbear Music Camp, or credit card through ultracamp. For a two week middle school session we recommend \$30-\$100.

To add money through credit card on ultracamp: Log into your account and click "additional options" Upper right hand side.

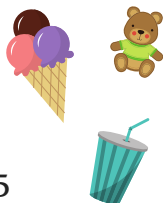
Prices-

Snacks/Soda \$1-\$4

T-shirts \$15

Sweatshirts \$25-\$30

Other camp gear \$3-\$25



The camp store will be open before and after the concert. At this time we will accept credit card payments.

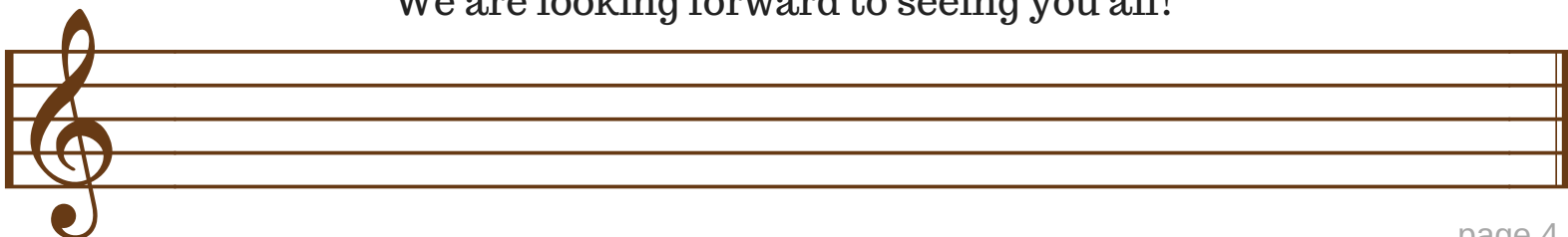
Sleeping arrangements

Bunks will be chosen before dinner after campers have had a chance to meet the counselors and see the sleeping areas. Friends will have no problem finding beds near each other.

Visitors

We discourage visiting as it detracts from the overall camp experience and bonding of campers. Visits are only permitted with prior permission from the camp office. The camp day to day activities may vary from the posted schedule.

Thank you
We are looking forward to seeing you all!





Packing List



Clothing

- Enough comfortable outdoor clothing for 2 weeks-

Example:



- Jeans/ long pants
- Shorts
- T-shirts/ tank tops
- Sweat shirt/ sweater
- Pajamas
- Socks
- underwear
- Closed-toe shoes (hiking boots/ tennis shoes)
- Bag or collapsible hamper to hold dirty clothing
- Concert clothes: slacks, khakis, or skirts; blouse, polo, or other collared shirt

Music related

- Instrument
- Pencils- soft lead
- Eraser
- Clothes pins to hold music
- Any items you may need for your instrument: mutes, reeds, extra strings, fingering chart (winds)



Misc.

- Reusable water Bottle (or purchase one at the camp store)
- Flashlight or headlamp



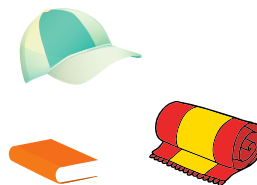
Toiletries

- Towel and washcloth for shower
- shower sandals (plastic flip flops)
- Toothbrush, toothpaste, and floss
- Shampoo and soap
- Sunscreen and chapstick
- Bug repellent
- Any other personal items you may need



Optional items

- Fitted sheet (to cover vinyl mattress)
- Blankets
- Swimsuit
- Pool towel
- Hat
- Sunglasses
- Hiking boots/ hiking gear
- Sandals (appropriate for rugged terrain)
- Snack food in a labeled container
- Extra music for practice/ performance with accompaniment if needed
- Stamps and envelopes
- White clothing for tie-dying
- Camera
- Books/ magazines
- games
- drawing supplies



Bedding

- Warm Sleeping Bag- temps may drop below the 40's- please pack accordingly
- Pillow

Make sure to label all belongings with the camper's name. Aside from your instrument, please leave all valuables at home. Arrowbear Music Camp will not be held responsible for lost money or valuables.